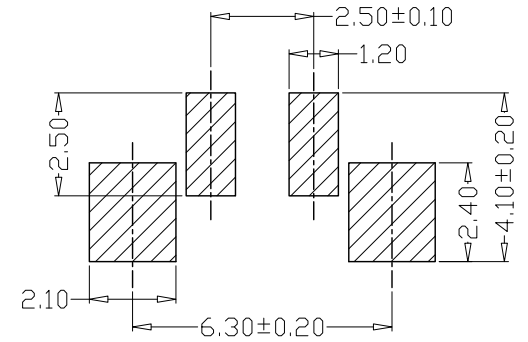
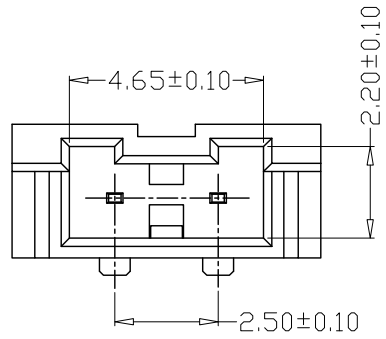


6	8	7	9
版本 REV.	日期 DATE	变更内容 DESCRIPTION	制图 DRAWN

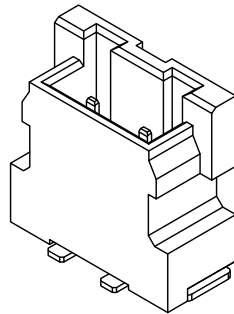
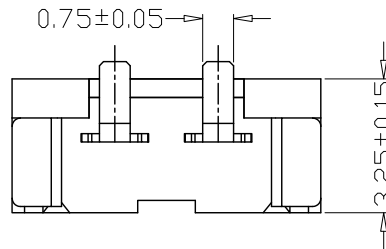
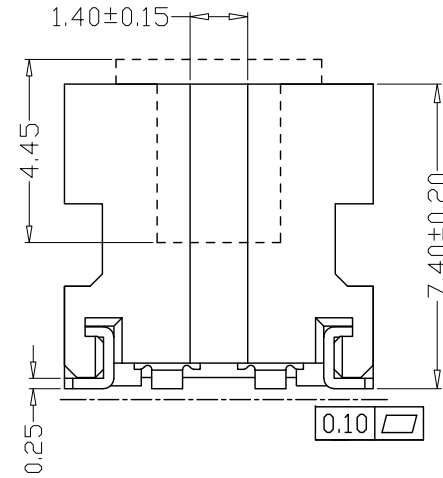
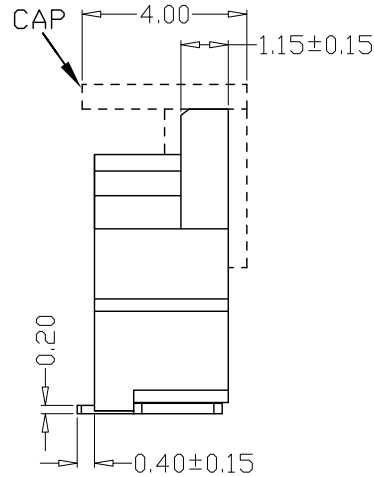
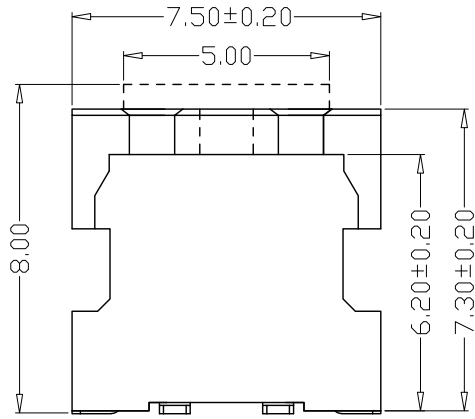
SPECIFICATIONS

- 1、Current Rating: 1A AC, DC
- 2、Voltage Rating: 250V AC, DC
- 3、Temperatuer Range: -25°C~+130°C
- 4、Contact Resistance: 20mΩ Max
- 5、Insulation Resistance: 1000MΩ Min
- 6、Withstanding Voltang: 1000V AC/minute
- 7、Material

Wafer: PA6T UL94V-0  
 PIN: phosphor bronze Tin-plated  
 Solder tab: Brass Tin-plated



PCB LAYOUT



GENERAL TOLERANCE		制图 Mapping	张迎春 2022、09、17		料号 PART NO.	B25002-2AB	版本 REV.	A
X±0.25	X°±2°	审核 Audit	钱岳生 2022、09、17		品名 TITLE	25001立贴 WAFER SMT TYPE	页次 SHEET	1/1
.X±0.25	.X°±1°	核准 Approved	张名 2022、09、18		客户料号 CUTM. NO.			
.XX±0.15	.XX°±0.5°	单位 Units	mm	比例 SCALE	<b>乐清市宏一电子有限公司</b> YueQing HongYi Electronics Co., Ltd			
.XXX±0.10	.XXX°±0.5°							